



AROORA
CENTRE FOR
**PRECLINICAL
RESEARCH**

Empowering discovery. Advancing Healthcare



CENTRE FOR
**PRECLINICAL
RESEARCH**

EMPOWERING DISCOVERY

ADVANCING HEALTHCARE

Aroora Centre for Preclinical Research is a pioneering hub committed to accelerating biomedical innovations through advanced preclinical testing and translational research.

Specializing in zebrafish, rat & mice models, our centre provides cutting-edge platforms for preclinical studies that are cost-effective, genetically relevant and scientifically robust.

WHY US?

Compliant with national and international guidelines including **OECD, CPCSEA and GLP-aligned protocols.**

Adheres to **standardized regulatory frameworks** to ensure ethical and scientifically sound research practices

Delivers **reliable and accurate reports**, reviewed and validated by experienced scientific experts

Implements rigorous quality control measures for **reproducibility and data integrity**

Trusted by industry and academia for **regulatory-ready documentation** and precise scientific evaluation

DELIVERING
SCIENTIFIC
EXCELLENCE,
RELIABLE
RESULTS &
INSIGHTFUL
DISCOVERIES

ZEBRAFISH

Research Model



We harness the full potential of **Zebrafish (Danio rerio)** as an advanced and versatile model organism.

With **~70% genetic similarity to humans**. Ideal for studying **complex biological processes and evaluating drug effects**.



Faster Models



Transparent Embryos



Response Assessment



Neurological Research



High Throughput



Gene Manipulation

DISEASE MODELS

- Metabolic Disorders (e.g. Diabetes)
- Neurodegenerative Models
- Oncology Models
- Infectious Models
- Wound Healing Studies
- Obesity/Weight Loss Model
- PCOS & UTI Models
- Cardiovascular Models

Acute Toxicity Study

Sub-Acute Toxicity Study

Hepatotoxicity Study

Neurotoxicity Study

Embryo Acute Toxicity (ZET) Assay

Genomic Biomarker Analysis

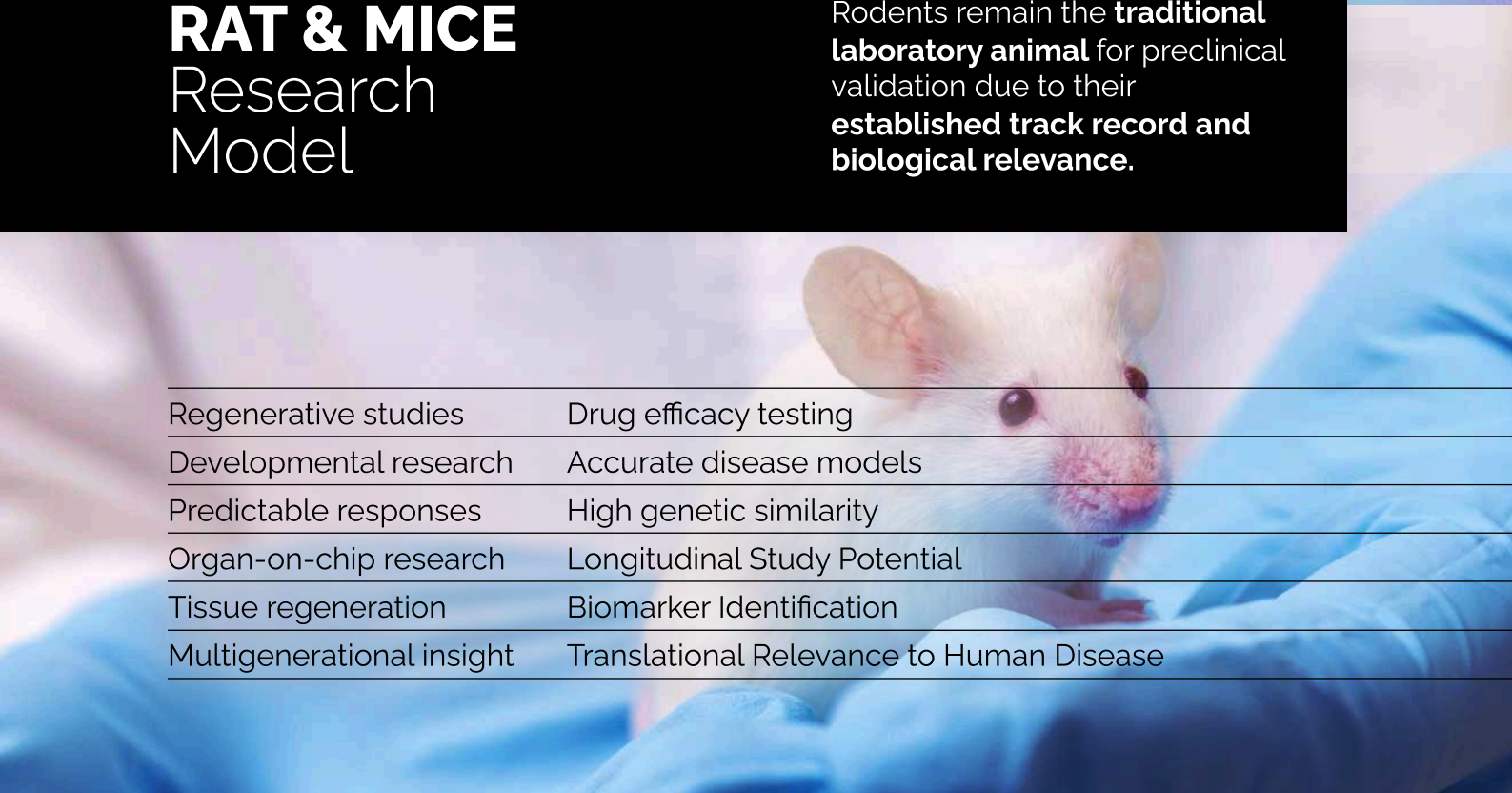
TOXICOLOGY STUDY

RAT & MICE

Research Model

Rodents remain the **traditional laboratory animal** for preclinical validation due to their **established track record and biological relevance**.

| | |
|---------------------------|--|
| Regenerative studies | Drug efficacy testing |
| Developmental research | Accurate disease models |
| Predictable responses | High genetic similarity |
| Organ-on-chip research | Longitudinal Study Potential |
| Tissue regeneration | Biomarker Identification |
| Multigenerational insight | Translational Relevance to Human Disease |



GENE EXPRESSION Analysis

Gene expression analysis is a **crucial tool for understanding biological techniques, disease mechanisms, and therapeutic responses.**

Our advanced gene expression services support research across the **discovery, development, and diagnostic phases.**



Biomarker
Discovery



Real-time
Monitoring



Expression
Profiling



Response
Assessment

Innovative Methodologies

High Impact Research Publications

Understanding **Biological Processes**

Disease Research & **Drug Development**

Enzymatic Activity Assays

Biomarker Analysis

Oxidative Stress Assays

Cytotoxicity Assays

Protein Expression Studies

Inflammatory Marker Analysis

**BIOCHEMICAL
ANALYSIS**

Histopathology remains the **gold standard for understanding tissue-level alterations** of diseases and therapeutic interventions.

Our **state-of-the-art facilities** provide **detailed tissue analysis** for reliable research outcomes.

HISTOPATHOLOGY

Gross Examination

Fixation & embedding

Sectioning & staining

Microscopic examination

Reporting & documentation



Whole
slide
scanning



Quantitative
Image
Analysis



AI Driven
Pattern
Recognition

**Digital Pathology &
AI-Driven Imaging**

Cutting-edge methods,
transforming traditional
histopathology with
AI-driven precision.

LABORATORY SERVICES

- Hematology
- Serum Biochemical Testing
- Urine Analysis
- Blood Smear Examination
- Histopathology & Slide Interpretation
- Digital Microphotography
- Liver Enzymes (ALT, AST, ALP)
- Kidney Function Markers (BUN, Creatinine), Glucose, Total Protein, Albumin, Globulins, and Electrolytes
- Genetic Markers
- RT-PCR, qPCR & qRT-PCR (SYBR Green-Based)
- Karyotyping (Chromosomal Abnormalities & Genetic Stability)
- Genotyping & Gene Expression
- Imaging (Scan, X-Ray & CT Scan)
- ECG
- Endoscopy



OFFICE ADDRESS

AROORA BIOTECH PVT LTD
CENTRE FOR PRECLINICAL RESEARCH
No 61/2A, Attur Main Road, Rasipuram,
Namakkal, Tamil Nadu, India - 637 406.

(+91) 89255 50540
info@arooracro.com
www.arooracro.com



CENTRE FOR PRECLINICAL RESEARCH

YOUR CONFIDENCE BACKED BY SCIENCE

We accept samples from various industries:

